



## Hidden Console Vault

PN: 100HCV

100 Series Land Cruiser/Lexus LX470

Congratulations on your new **Massive Hidden Console Vault!** This instruction manual illustrates the recommended steps to install your vault.

Your kit includes:

- Console Vault
- Simplex lock kit
- (2) Large Phillips screws
- (4) Small Phillips screws
- (4) Washers

It is recommended to install the vault (in raw finish) to test fit and check for normal operation before applying a finish to avoid any damage or scratches to the top coat. The vault can be installed and removed through the top opening in the center console making test fitting a simple process.

## INSTALLATION

1. Remove the center console bezel by lifting up on the cup holder cover. It is held in place with clips. Remove any wiring harness clips attached to seat heater switches, power/2<sup>nd</sup> switches, etc.. Set bezel aside.



2. Remove the two screws on either side of the front portion of the center console. These are hidden by the front seats. Slide the seats rearward to gain access. A right angle screwdriver may be needed.



3. Remove the two lower screws, one on either side of the rear portion of the center console. These are hidden by the front seats. Slide the seats forward to gain access.



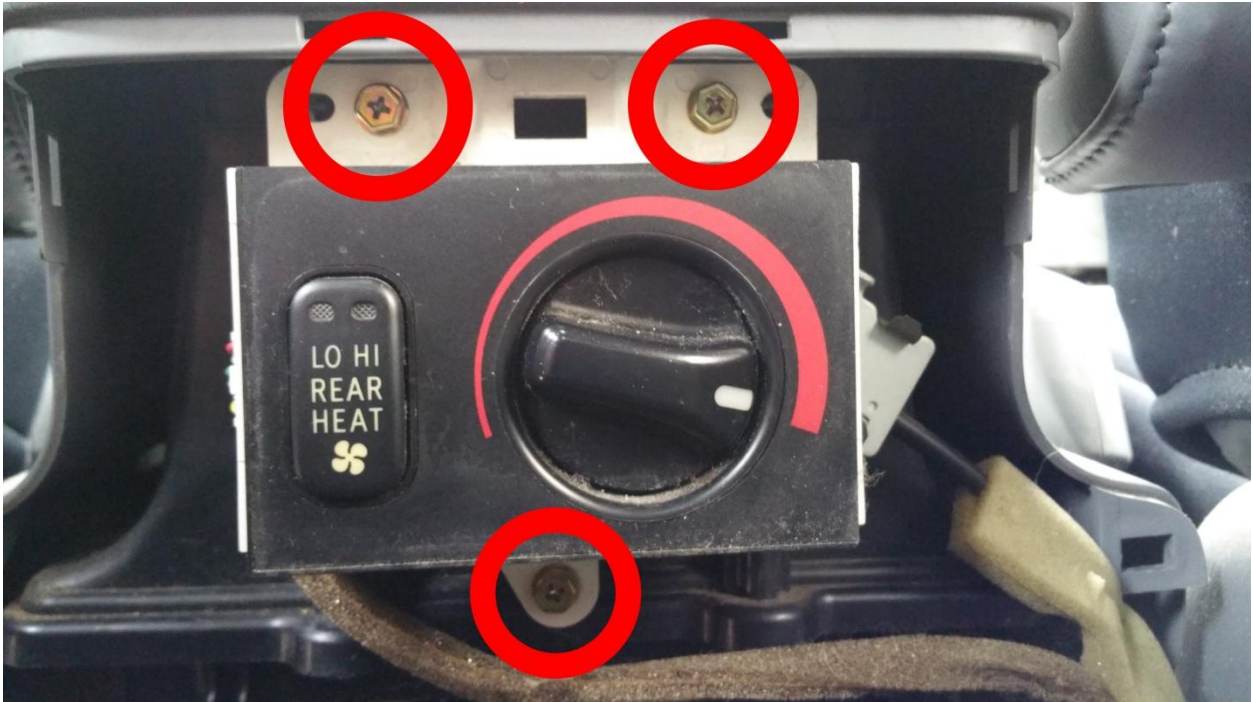
4. Open the 2<sup>nd</sup> row cup holder and remove the two screws. They are behind and just above the cup holders.



5. Pull the rear panel/cupholder assembly away from the center console.



6. Remove the screws holding the rear heater control in place. Rear audio controls or other factory installed options may have different mounting screw locations.



7. Unplug the 12V accessory socket from the harness.



8. Remove the entire center console by sliding it up and over the parking brake lever.
9. Set the center console upside down on a work surface to access the mounting screws.
10. Remove the entire console liner from the center console by removing the four screws on the outside of the console (not pictured), and by removing the following eight screws:

- Two screws at the rear



- Four screws at the front

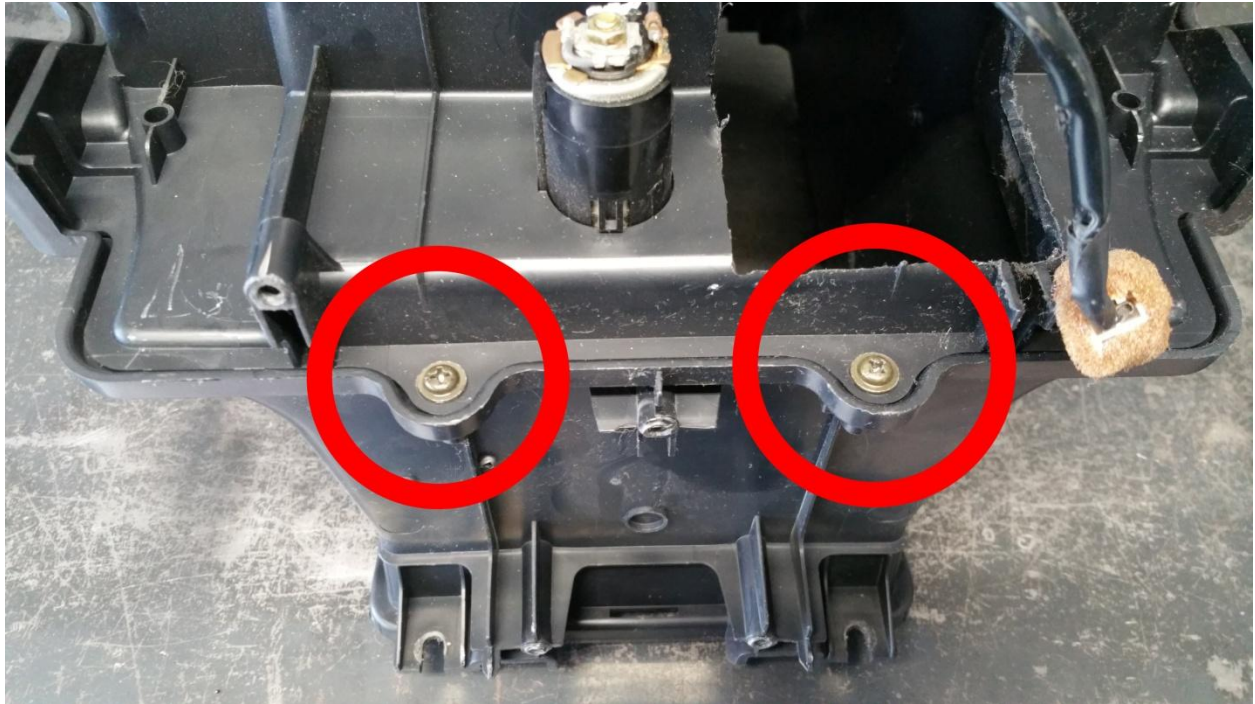


- Two screws, one on either side of the console liner



11. Lift and remove the entire console liner from the center console.
12. Detach the console liner lower half from the upper half by removing these five screws:

- Two screws at the rear

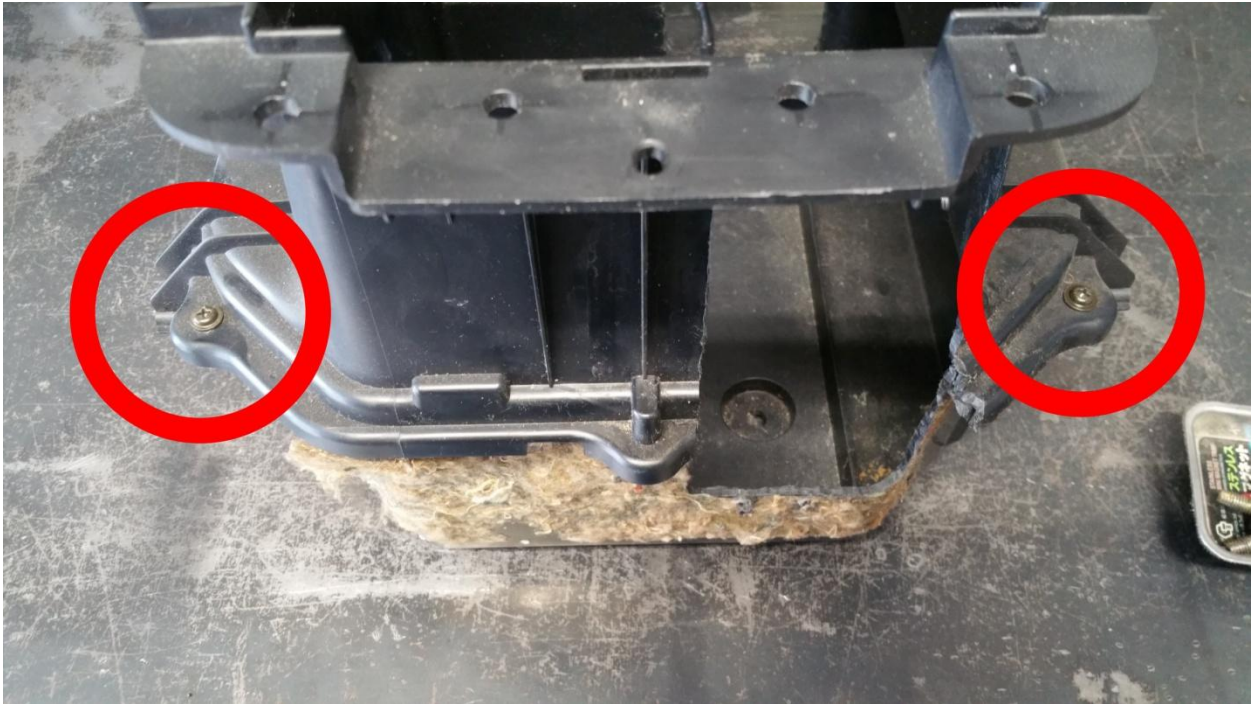


- One screw at the front  
*\*Please disregard the gaping hole the previous owner of the vehicle had cut to install an aftermarket CD changer.*





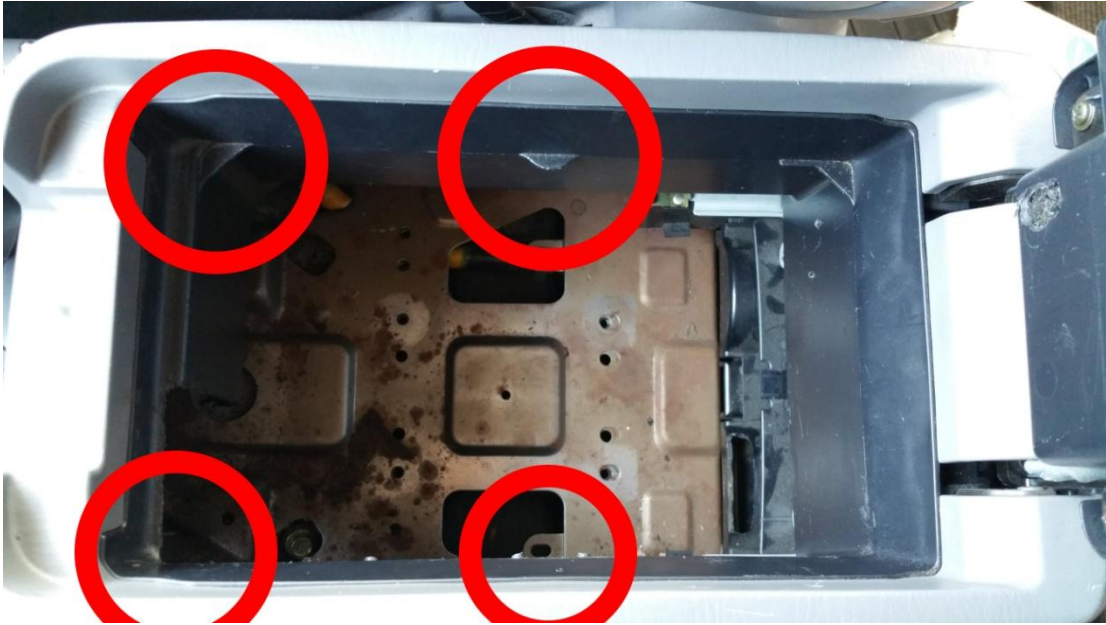
- Two screws underneath the lip (flip entire console right-side up for access)



13. Separate the console liner halves.



14. This step applies to Land Cruisers only and does not apply to LX470. There are six tabs molded into the upper half of the console liner that are used to support an optional cup holder insert. Four of these tabs (the four closest to the front of the vehicle, circled in red) need to be removed in order for the vault door to open. Some of the tabs in the example photo have already been removed. The two rearmost tabs do not need to be removed. A Dremel or other rotary tool makes quick work of removing these tabs. This is the only non-reversible part of this installation.



15. Reinstall the upper half of the console liner with twelve screws.



16. Reinstall the center console and console bezel. Reattach the rear panel with the supplied large Phillips screws. Do not overtighten as the rear cup holder bracket can bend. Opening the center armrest and upper console cubby, you should now see this cavity:



17. Lower the vault into the console cavity. You may find it easier to open the vault and hold onto the lid and front panel to lower the vault into place. Loosely install the screws and washers. Adjust the vault position to the "sweet spot" where the vault door opens and closes without rubbing on the console liner, and where the rear cup holders are properly functioning. Tighten the four screws.



Congratulations on installing your new Massive Hidden Console Vault! Now just remove it and paint it pink and you're good to go!

